



# 2D Bluetooth Wireless Portable Barcode Scanner RFID Reader

## HW-6800B/C/D

B version: Support 1D/2D barcode

C version: Support 1D/2D barcode+IC card

D version: Support 1D/2D barcode+ID card

## FEATURES & BENEFITS

- 32-bit high performance CPU
- Pixel resolution 640\*480
- Support 1D/2D barcode on paper and screen
- Support IC/ID card reading(13.56MHz,125KHz)
- Support Instant upload, offline mode
- Bluetooth4.0, 2.4GHz RF communication
- Transmission distance-Bluetooth 10m,RF 80m
- 1000mAH battery,16MB memory, potable, mini size.



## Application



## Application



Logistics



Warehouse



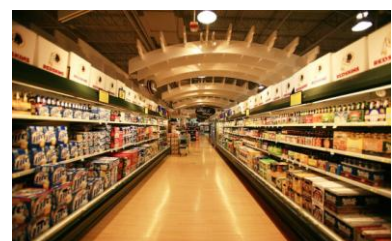
Medical



Library



Shopping Mall



Supermarket

# Technical Specification

## HW-6800 Parameters

Barcode Reading performance	Image Sensor	CMOS
	Resolution	300 thousand 640*480pixels
	Decoding capacity	Support paper and screen barcodes
		2D: QR, PDF417,Data Matrix code etc.
		1D:UPC-A, UPC-E, EAN-8, EAN-13, Code128, Code39, Code93, Code 11, Interleaved 2 of 5, Matrix 2 of 5, China post etc.
	Barcode Density	8mil
	Light Source	624nm Visible red LED, white LED
	Scan Angle	Rotation360°, tilt $\pm 45^\circ$ , skew $\pm 45^\circ$
	Min Contrast	30%
	Scanning Speed	200 times/s
Card Reading Performance	Typical DOF	40-180mm(10mil code128) 45-240mm(10mil QR) Performance may be impacted by bar code quality and environmental conditions
	RFID Frequency	13.56MHz 125KHz
	Card Type	S50 S70 ULTRALIGHT CPU TK4100 EM4100 etc. compatible IC/ID
	Data format	Default 8 bit Hex(format customized, like 10 bit 10 system,10 bit Hex)
	Reading Distance	20-60mm(depend on card type)
	Reading Rate	106K/Bit
	Reading Speed	0.1S
	Interval	0.5S
	Reading Time	$\leq 100\text{ms}$
	Interface	USB(Type C) Bluetooth4.0 2.4GHz RF wireless(USB dongle)
Mechanical and electrical	Working Voltage	DC 5V
	Current	100mA(working)
	Battery Capacity	1000mAH
	Dimensions	105*48*25mm 143*90*61mm(Single Package)
	Weight	50g(NW) 200g(Package)
	Indication	Buzzer & LED & Vibration
	Operation System	WIN7 WIN10 IOS ANDROID LINUX
Environment Request	Working Tem	-20~70℃
	Storage Tem	-40~85℃
	Humidity	5%-95%(Non-condensing)
	Light Immunity	0~10,000Lux
	Drop Test	1.8M

### Notes:

1. Bluetooth connection: open Bluetooth interface of mobile device, press the reader's button 1secods,and then click its Bluetooth name to connect on mobile device, there is no password.
2. Support to read RFID(13.56MHz,125KHz card),do not support to read 2.4GHz Bluetooth card.
3. When transmitting data, please check the entering language as English.
4. Card reading method, please use the front of card near the reading area.
5. USB Type C interface just for charging, not for transmitting data.
6. The output data with "enter", no need to add manually.